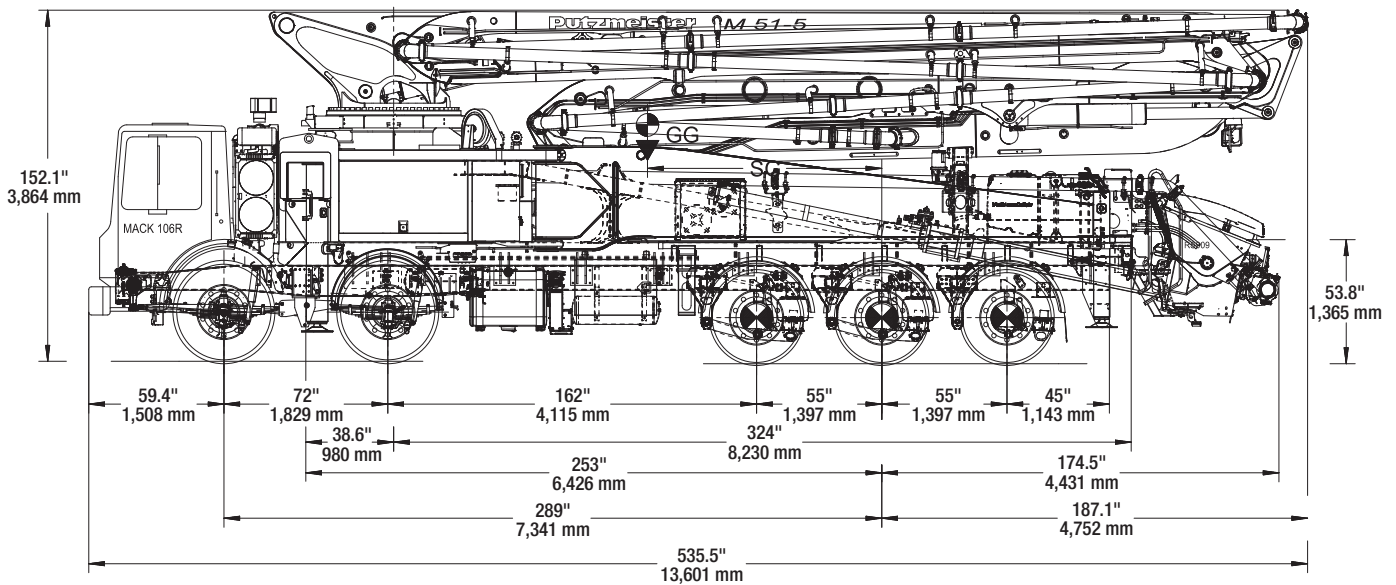


# 51Z-Meter Truck-Mounted Specifications

## Machine Dimensions

	Imperial	Metric
Length	44' 7"	13.60 m
Width	8' 2"	2.50 m
Height	12' 9"	3.89 m
Wheelbase	289"	7,341 mm



Based on Model BSF51-5.16H MACK 106R/289.

Dimensions will vary with different truck makes, models, and specifications.

Weights are approximate and include pump, boom, truck, driver, and full fuel tank. Varies with options selected.

Maximum theoretical pump values listed.

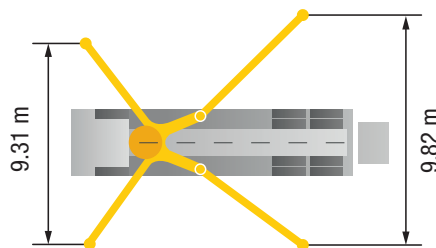
\* Applies to units mounted on a PMA stock truck - Mack 106R/289.

- Standard delivery line system rated at max line pressure of 1,233 psi (85 bar)

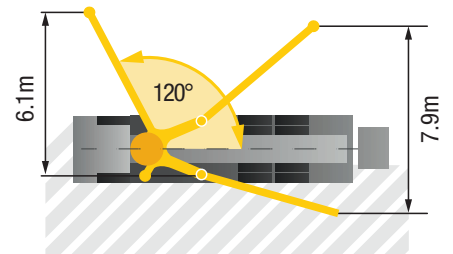
## Outrigger Spreads

	Imperial	Metric
Front — L - R   hydraulically extended out & down	30' 6"	9.31 m
Rear — L - R   hydraulically swing out & extend down	32' 3"	9.82 m

### Standard



### One-Side Support (OSS)



## Weight

	Imperial	Metric
Front axle weight	37,164 lbs	16,857 kg
Rear axle weight	54,196 lbs	24,583 kg
Approximate total weight	91,360 lbs	41,441 kg

### Boom

### Range Diagram

Roll-Z-folding Design      Imperial      Metric

#### Height & Reach

Vertical reach	164' 4"	50.10 m
Horizontal reach	147' 4"	44.90 m
Reach from front of truck*	132' 3"	40.30 m
Reach depth	114' 6"	34.90 m
Unfolding height	33' 6"	10.20 m

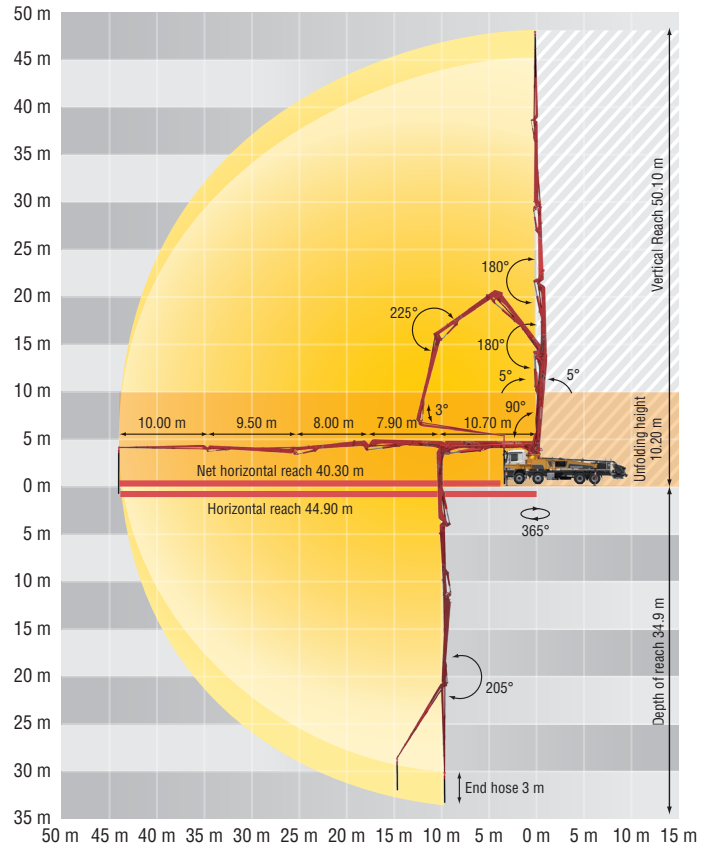
#### 5-Section Boom

1 <sup>st</sup> section articulation	90°
2 <sup>nd</sup> section articulation	180°
3 <sup>rd</sup> section articulation	180°
4 <sup>th</sup> section articulation	225°
5 <sup>th</sup> section articulation	205°

1 <sup>st</sup> section length	31' 10"	10.70 m
2 <sup>nd</sup> section length	26' 7"	7.90 m
3 <sup>rd</sup> section length	26' 11"	8.00 m
4 <sup>th</sup> section length	27' 3"	9.50 m
5 <sup>th</sup> section length	32' 10"	10.00 m

#### General Specifications

	Imperial	Metric
Pipeline Size (ID) metric ends	5"	125 mm
Rotation	365°	
End hose — length	10' 0"	3.00 m
End hose — diameter	5"	125 mm



### Pump

#### 51Z.16 H

#### 51Z.17 iLS

#### 51Z.19 iLS

		Imperial	Metric	Imperial	Metric	Imperial	Metric
Output	Rod side	209 yd <sup>3</sup> /hr	160 m <sup>3</sup> /hr	—	—	—	—
	Piston side	141 yd <sup>3</sup> /hr	108 m <sup>3</sup> /hr	222 yd <sup>3</sup> /hr	170 m <sup>3</sup> /hr	254 yd <sup>3</sup> /hr	194 m <sup>3</sup> /hr
Pressure	Rod side	1,233 psi	85 bar	—	—	—	—
	Piston side	1,885 psi •	130 bar •	1,233 psi	85 bar	1,233 psi	85 bar
Material cylinder diameter		9"	230 mm	10"	250 mm	10"	250 mm
Stroke length		83"	2,100 mm	83"	2,100 mm	83"	2,100 mm
Maximum strokes per minute	Rod side		31		—		—
	Piston side		21		28		31
Volume control			0-Full		0-Full		0-Full
Vibrator			Standard		Standard		Standard
Hard-chromed material cylinders			Standard		Standard		Standard
Hydraulic system			Free Flow		Free Flow		Free Flow
Hydraulic system pressure		5,075 psi	350 bar	6,092 psi	420 bar	6,092 psi	420 bar
Differential cylinder diameter		5.5"	140 mm	4.5"	115 mm	4.5"	115 mm
Rod diameter		3.1"	80 mm	3.1"	80 mm	3.1"	80 mm
Maximum size aggregate		2.5"	63 mm	2.5"	63 mm	2.5"	63 mm
Water tank — pedestal		185 gal	700 L	185 gal	700 L	185 gal	700 L